

.059"(1.50mm) pitch Wire to Board Housing

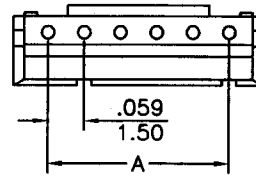


CH1500 Series

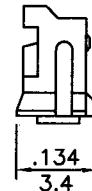
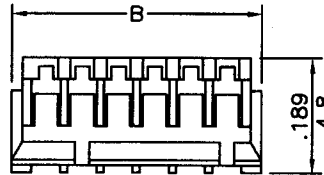
- * Poles: 2-13
- * Material: NYLON 66 UL94V-0
- * Suitable CT1500T series terminal
- * Mates with CW1500X-XX series wafer

Specifications

- * Current rating: 0.7A AC, DC
- * Voltage rating: 50V AC, DC
- * Temperature range: -25°C~+85°C
- * Insulation resistance: 500MΩ min.
- * Withstand voltage: 500V AC/minute



inches
mm

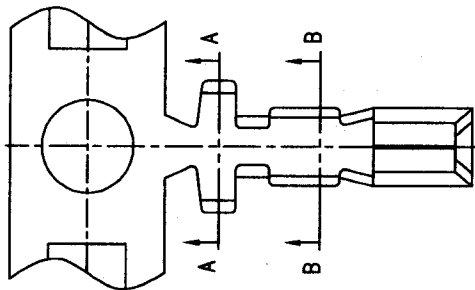


CKTS	PART NO.	DIMENSION in.(mm)	
		A	B
2	CH1500-02	0.059(1.50)	0.177(4.5)
3	CH1500-03	0.118(3.00)	0.236(6.0)
4	CH1500-04	0.177(4.50)	0.295(7.5)
5	CH1500-05	0.236(6.00)	0.354(9.0)
6	CH1500-06	0.295(7.50)	0.413(10.5)
7	CH1500-07	0.354(9.00)	0.472(12.0)
8	CH1500-08	0.413(10.50)	0.531(13.5)
9	CH1500-09	0.472(12.00)	0.591(15.0)
10	CH1500-10	0.531(13.50)	0.650(16.5)
11	CH1500-11	0.591(15.00)	0.709(18.0)
12	CH1500-12	0.650(16.50)	0.768(19.5)
13	CH1500-13	0.709(18.00)	0.827(21.0)

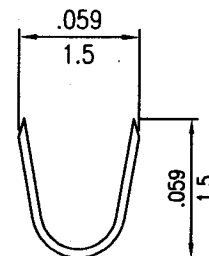
.059"(1.50mm) pitch crimp terminal

CT1500T Series

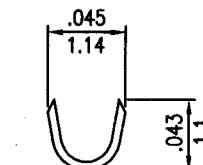
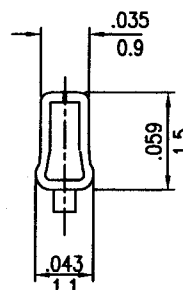
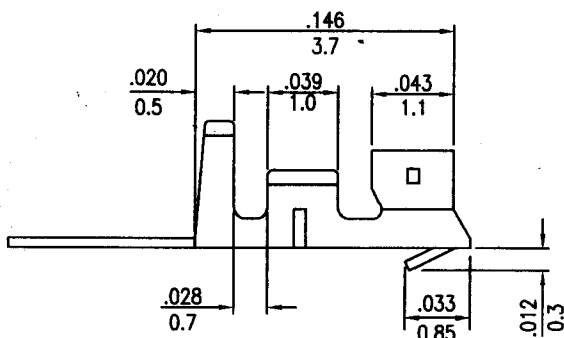
- * Material: Phos bronze
- * Finished: Tin-plated 60u"
- * Used in CH1500-XX series housings
- * Wire range: AWG#28~#32
- * Insulation O.D: 1.20mm(max)
- * Thickness: 0.2mm
- * Q'TY: 15,000pcs/reel



inches
mm



A-A SECTION



B-B SECTION